

2 and 4 Wire SHDSL

Up to 4.6Mbps

Ethernet Bridge

FlexDSL Discovery

TDM Based SHDSL Ethernet Bridge



Features

- 2 and 4 Wire SHDSL (TC-PAM16)
- Up to 4.6Mbps
- Ethernet Bridge (10/100BaseT)
- Transparent Bridging Functionality
- Optional 2x Analog Voice Ports (FXS/FXO)
- Point-to-Point and Point-to-Multipoint
- 1+1 Protection Option
- VLAN (IEEE 802.1q) Support
- Console Port, Telnet, SNMP Management
- Repeater/Regenerator Support

The TDM based FlexDSL Discovery series, which utilizes the latest SHDSL technologies, offers symmetrical transmission services at speeds up to 2.3Mbps and 4.6Mbps over 1 and 2 copper pairs respectively. Unlike many other Ethernet DSL modems, FlexDSL's Discovery modems transmit Ethernet directly over SHDSL. This secures highest possible file transfer rates due to the absence of bandwidth eroding layer 2 protocols such as Frame Relay and ATM. Because of its easy configuration the TDM Discovery can also be installed by non-professional individuals.

Furthermore, the Discovery product family contains voice modems capable of transporting two voice channels in addition to data. Voice is digitally transmitted using "clear channel" 64kbps PCM coding. Protected (1+1) operation over two copper pairs with a maximum speed of 4.6Mbps is another Discovery attribute providing highest possible reliability and maximum flexibility for mission critical services and trunk communications. The support of SHDSL repeaters/regenerators makes Discovery modems an inexpensive, copper based long reach transmission system for campus, industrial, and residential applications.

Various management options such as Telnet and SNMP support allow real time monitoring and statistics for maintenance and billing purposes.

FlexDSL Discovery modems are available in table top or rack mount form factors. The capacity of the CO shelf can be incrementally extended with one or two DSL ports in order to grow as you go!

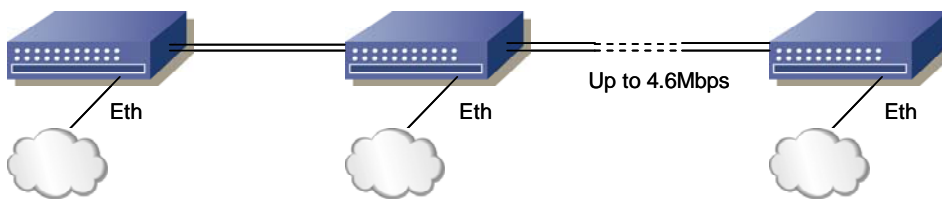
Specifications are subject to change without notice

2 and 4 Wire SHDSL

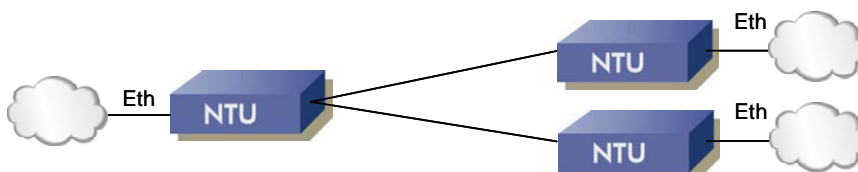
Up to 4.6Mbps

Ethernet Bridge

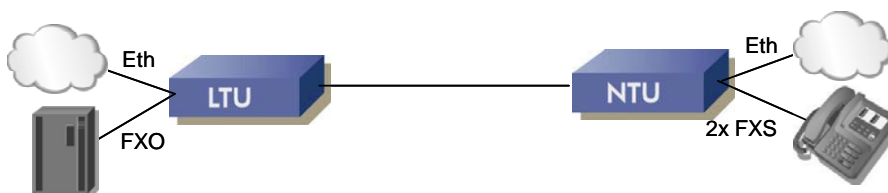
FlexDSL Discovery SHDSL Applications



Industrial Ethernet for SCADA Applications (i.e. Railway, Pipeline, and Motorway)



Point-to-Multipoint Ethernet Application



Point-to-Point Application with Analog Voice Support

Specifications are subject to change without notice

2 and 4 Wire SHDSL

Up to 4.6Mbps

Ethernet Bridge

FlexDSL Discovery SHDSL Standalone Modem



Model: FG-PAM-SAN-Eth

DSL Version: SHDSL (TDM)
 Modulation: TC-PAM16
 Data Rate: 64kbps - 2.3Mbps
 Copper Pairs: 1
 Modes: Master / Slave
 Interface: Ethernet Bridge (10/100BaseT)
 Power: 12VDC < 3.4W
 Physical Interfaces: RJ45 (Ethernet), RJ48 (SHDSL), Power Jack 2.1/5.3mm (Power), DB9 (Management)
 Management: Console Port, Telnet, and SNMP
 Power Supply: Included (220VAC/12VDC)

Model: FG-PAM-SAN-Eth, 4W

DSL Version: SHDSL (TDM)
 Modulation: TC-PAM16
 Data Rate: 64kbps - 4.6Mbps
 Copper Pairs: 2
 Modes: Master / Slave
 Interface: Ethernet Bridge (10/100BaseT)
 Power: 12VDC < 5.4W
 Physical Interfaces: RJ45 (Ethernet), RJ48 (SHDSL), Power Jack 2.1/5.3mm (Power), DB9 (Management)
 Management: Console Port, Telnet, and SNMP
 Power Supply: Included (220VAC/12VDC)
 Remarks: 1+1 Protection and Point-to-Multipoint Features Supported

Model: FG-PAM-SAN-Eth/FXS

DSL Version: SHDSL (TDM)
 Modulation: TC-PAM16
 Data Rate: 64kbps - 2.3Mbps
 Copper Pairs: 1
 Modes: Master / Slave
 Interface: Ethernet Bridge (10/100BaseT)
 Power: 12VDC < 6.3W
 Physical Interfaces: RJ45 (Ethernet), 2x RJ11 (Voice), RJ48 (SHDSL), Power Jack 2.1/5.3mm (Power), DB9 (Management)
 Management: Console Port, Telnet, and SNMP
 Power Supply: Included (220VAC/12VDC)
 Remarks: Offers 2x FXS Interfaces (occupies 2x 64k TS, no configuration required)

Model: FG-PAM-SAN-Eth/FXO

DSL Version: SHDSL (TDM)
 Modulation: TC-PAM16
 Data Rate: 64kbps - 2.3Mbps
 Copper Pairs: 1
 Modes: Master / Slave
 Interface: Ethernet Bridge (10/100BaseT)
 Power: 12VDC < 5W
 Physical Interfaces: RJ45 (Ethernet), 2x RJ11 (Voice), RJ48 (SHDSL), Power Jack 2.1/5.3mm (Power), DB9 (Management)
 Management: Console Port, Telnet, and SNMP
 Power Supply: Included (220VAC/12VDC)
 Remarks: Offers 2x FXO Interfaces (occupies 2x 64k TS, no configuration required)

Specifications are subject to change without notice

2 and 4 Wire SHDSL

Up to 4.6Mbps

Ethernet Bridge

FlexDSL Discovery SHDSL Sub Rack Module



Model: FG-PAM-SRL-Eth

DSL Version: SHDSL (TDM)
 Modulation: TC-PAM16
 Data Rate: 64kbps - 2.3Mbps
 Copper Pairs: 1
 Modes: Master / Slave
 Interface: Ethernet Bridge (10/100BaseT)
 Power: 48VDC < 5W
 Physical Interfaces: RJ45 (Ethernet), RJ48 (SHDSL), DB9 (Management)
 Management: Console Port, Telnet, and SNMP

Model: FG-PAM-SRL-Eth, 4W

DSL Version: SHDSL (TDM)
 Modulation: TC-PAM16
 Data Rate: 64kbps - 4.6Mbps
 Copper Pairs: 2
 Modes: Master / Slave
 Interface: Ethernet Bridge (10/100BaseT)
 Power: 48VDC < 7.5W
 Physical Interfaces: RJ45 (Ethernet), RJ48 (SHDSL), DB9 (Management)
 Management: Console Port, Telnet, and SNMP
 Remarks: 1+1 Protection and Point-to-Multipoint Features Supported

Model: FG-PAM-SRL-Eth/FXS

DSL Version: SHDSL (TDM)
 Modulation: TC-PAM16
 Data Rate: 64kbps - 2.3Mbps
 Copper Pairs: 1
 Modes: Master / Slave
 Interface: Ethernet Bridge (10/100BaseT)
 Power: 48VDC
 Physical Interfaces: RJ45 (Ethernet), 2x RJ11 (Voice), RJ48 (SHDSL), DB9 (Management)
 Management: Console Port, Telnet, and SNMP
 Remarks: Offers 2x FXS Interfaces (occupies 2x 64k TS, no configuration required)

Model: FG-PAM-SRL-Eth/FXO

DSL Version: SHDSL (TDM)
 Modulation: TC-PAM16
 Data Rate: 64kbps - 2.3Mbps
 Copper Pairs: 1
 Modes: Master / Slave
 Interface: Ethernet Bridge (10/100BaseT)
 Power: 48VDC < 5.8W
 Physical Interfaces: RJ45 (Ethernet), 2x RJ11 (Voice), RJ48 (SHDSL), DB9 (Management)
 Management: Console Port, Telnet, and SNMP
 Remarks: Offers 2x FXO Interfaces (occupies 2x 64k TS, no configuration required)

Specifications are subject to change without notice

2 and 4 Wire SHDSL

Up to 4.6Mbps

Ethernet Bridge

FlexDSL Discovery SHDSL Overview

Functionality FlexDSL Discovery	Standalone	Subrack Module	TDM	Bridge	Single Pair SHDSL	Dual Pair SHDSL	Multi-Point Operation	1+1 SHDSL Protection	Single Ethernet Port	VLAN Support	2x FXS	2x FXO	Console Port Management	Telnet Management	Optional SNMP Management
FG-PAM-SAN-Eth															
FG-PAM-SAN-Eth, 4W															
FG-PAM-SAN-Eth/FXS															
FG-PAM-SAN-Eth/FXO															
FG-PAM-SRL-Eth															
FG-PAM-SRL-Eth, 4W															
FG-PAM-SRL-Eth/FXS															
FG-PAM-SRL-Eth/FXO															

Specifications are subject to change without notice