

Orion/MiniFlex Dinrail Mechanics Application Note (20110712)

Contents

Contents.....	1
Summary.....	1
1 Standard Dinrail Modems	2
2 Special Mechanics.....	2

Summary

This document describes the possible mounting mechanics possibilities for dinrail applications. MiniFlex, Orion2 and Orion3 devices can be ordered in dinrail enclosures. Sometimes these enclosures have to be mounted in a special way.

1 Standard Dinrail Modems

The MiniFlex, Orion2 and Orion3 series offer standard dinrail modems and switches with different interfaces like Ethernet, E1 (G.703/G.704), Nx64 (X.21/V.35/V.36/V.24) and up to 4x SHDSL. The specifications of the interfaces can be seen in the corresponding short data sheets and manuals. Mechanical features are:

- High quality metal enclosure
- Powder coated RAL5003
- International protection IP 30
- Dinrail clip is conductive and can be used for the protection earth

The following pictures show the available dinrail mechanics in Orion2, Orion3 and MiniFlex series.



Figure 1.1. Orion2/3 and MiniFlex Dinrail Modems. MiniFlex Dinrail Switch.

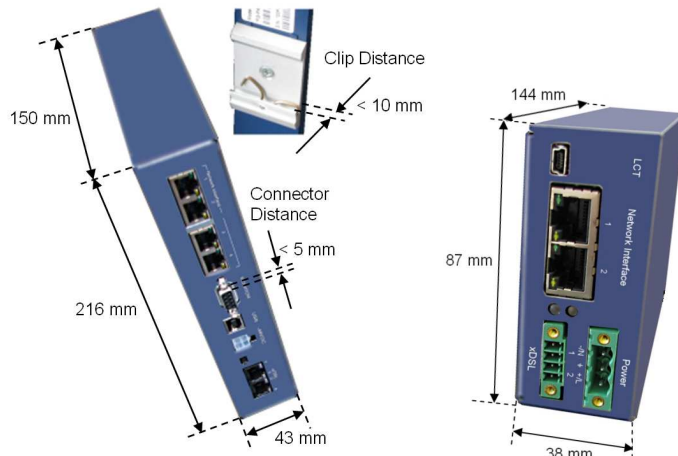


Figure 1.2. Mechanical Dimensions of Orion2/3 and MiniFlex Dinrail Modems and Switches.

2 Special Mechanics

For some applications it is needed to change the standard dinrail mounting. Here we show some examples, we are very open for special needs.



Figure 2.1. Comfortable Dinrail Clip for Orion2 and Orion3 (Article: FG-RAIL-ComfortClip).

There is sometimes the need to have 2 SHDSL modems or an SHDSL modem combined with a managed switch in a place with a limited height. For this we have a special holder.



Figure 2.2. Dinrail Holder for two Dinrail Modems/Switches (Article: FG-RAIL-Holder2Dinrail).

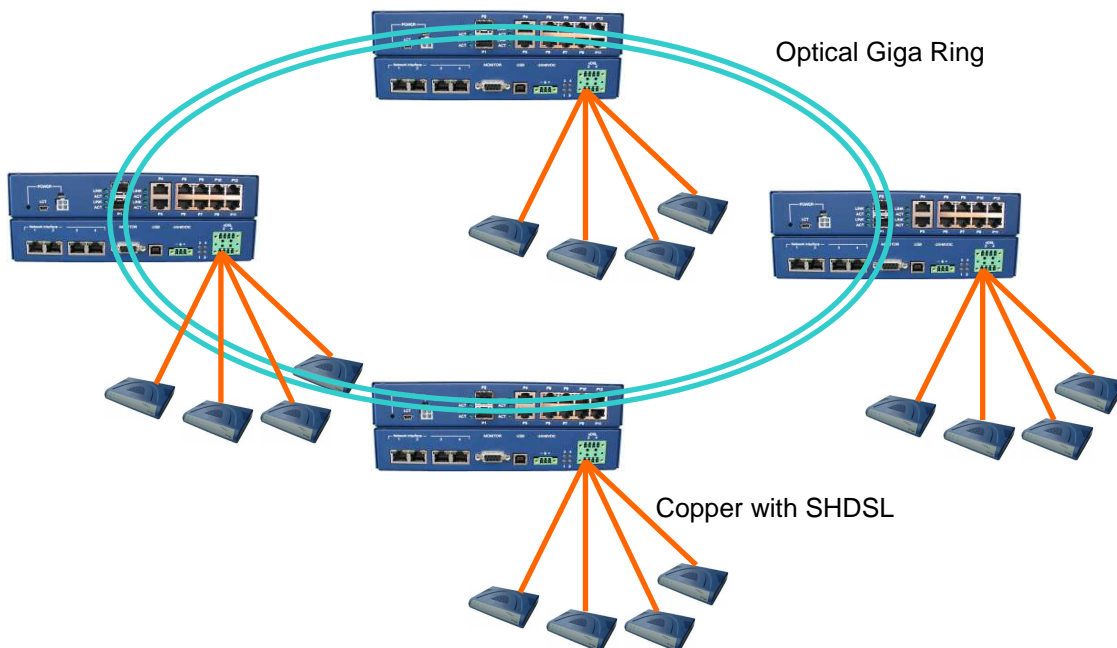


Figure 2.3. Possible Application with Orion3 and MiniFlex Switch.